

kenwerk

Leren in de praktijk

Kenwerk Őirketi adına hepinize  
**GÜNAYDIN**



# Sunum

- Hollanda'da Otelcilik ve Turizm Sektöründe Mesleki Eğitim ve Öğretimin (MEÖ) kısa geçmişi
- Hollanda MEÖ'nün özellikleri
- İşlemekte olan Ulusal Mesleki Yeterlilikler Sisteminden (NVQ) örnekler
- Yakın geleceğe bakış



## Hollanda'da (Otelcilik ve Turizm Sektöründe) MEÖ'nün kısa geçmişi

- MEÖ ve Otelcilik sektöründe köklü bir gelenek
- MEÖ'nün sektörün nitel ve nicel (personel ve ekonomik) gelişimine olan katkısı
- WEB'nin tanıtımı
- MEÖ ve Yaşam Boyu Öğrenme (YBÖ)



# Hollanda MEÖ'nün Özellikleri

- WEB çerçeve mevzuat / kanundur
- İşverenlerin ve sendikaların katılımı güçlüdür
- Finansman: hükümet ve sektör kuruluşları
- Sosyal sözleşme ile bağlantılıdır
- Yeterlilik çerçevesi sektör tarafından yapılan Pazar araştırmalarına dayalıdır
- Eğitim için üst yaş sınırı yoktur

# Hollanda Ulusal Mesleki Yeterlilikler (NVQ) sisteminin işleyişinden örnekler

1. Yeterlilik Çerçevesi
2. Süreç ve gelişim
3. İki örnek

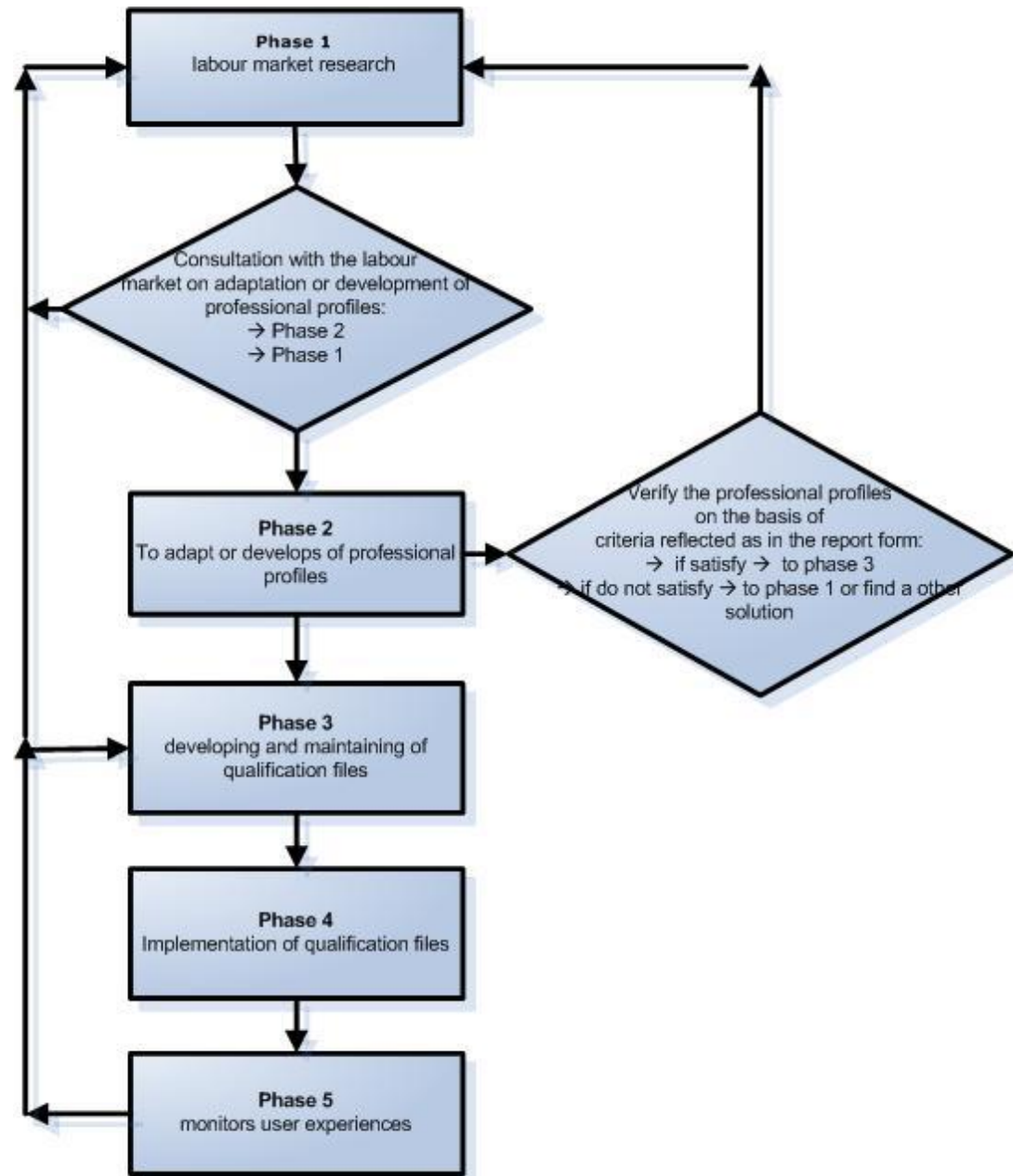


# Yeterlilik çerçevesi

## Kenwerk

LEVEL 1	<b>Assistant baker</b> Level 1 (90640)	<b>Hospitality assistant</b> Level 1 (90660)			<b>Labor market qualified assistant</b> Level 1 (90440)						
LEVEL 2	<b>Bread and Pastry</b> Level 2 (94220) <ul style="list-style-type: none"> <li>Baker and confectioner (94221)</li> <li>Confectioner (94222)</li> </ul>	<b>Server/Café-Bar employee</b> Level 2 (94140) <ul style="list-style-type: none"> <li>Host (94140)</li> </ul>	<b>Cook</b> Level 2 (90760) <ul style="list-style-type: none"> <li>Cook (90760)</li> </ul>	<b>Leisure &amp; hospitality</b> Level 2 (94110) <ul style="list-style-type: none"> <li>Leisure &amp; hospitality assistant (94110)</li> </ul>	<b>Aqua &amp; leisure</b> Level 2 (94080) <ul style="list-style-type: none"> <li>Aqua &amp; leisure assistant (94080)</li> </ul>	<b>Watersport</b> Level 2 (94960) <ul style="list-style-type: none"> <li>Watersport industry employee (94960)</li> </ul>	<b>Facility services</b> Level 2 (94170) <ul style="list-style-type: none"> <li>Facility services employee (94170)</li> </ul>	<b>Fastfood services</b> Level 2 (94190) <ul style="list-style-type: none"> <li>Fastfood service employee (94190)</li> </ul>			
LEVEL 3	Level 3 (94230) <ul style="list-style-type: none"> <li>Allround baker (94231)</li> <li>Allround confectioner (94232)</li> <li>Allround baker and confectioner (94233)</li> </ul>	Level 3 (94150) <ul style="list-style-type: none"> <li>Bartender (94151)</li> <li>Independent host (94153)</li> </ul>	Level 3 (94950) <ul style="list-style-type: none"> <li>Institution cook (94951)</li> <li>Independent cook (94952)</li> </ul>	<b>Front office employee</b> Level 3 (90620) <ul style="list-style-type: none"> <li>Information employee (90621)</li> <li>Receptionist (90622)</li> </ul>	Level 3 (94120) <ul style="list-style-type: none"> <li>Leisure &amp; hospitality host (94120)</li> </ul>	Level 3 (93240) <ul style="list-style-type: none"> <li>Aqua &amp; leisure host (93240)</li> </ul>	Level 3 (94970) <ul style="list-style-type: none"> <li>Watersport industry Allround employee (94970)</li> </ul>	<b>Travel</b> Level 3 (94090) <ul style="list-style-type: none"> <li>Travel sales agent (94090)</li> </ul>	Level 3 (94200) <ul style="list-style-type: none"> <li>First fastfood service employee (94200)</li> </ul>		
LEVEL 4	Level 4 (94240) <ul style="list-style-type: none"> <li>Pastry chef (94241)</li> <li>Head of traditional bakery (94242)</li> </ul>	<b>Hospitality/bakery entrepreneur</b> Level 4 (90300) <ul style="list-style-type: none"> <li>Café/bar Manager/entrepreneur (90301)</li> <li>Fastfood service Manager/entrepreneur (90302)</li> <li>Hospitality Manager/entrepreneur (90303)</li> <li>Bakery entrepreneur (90304)</li> </ul>	Level 4 (94160) <ul style="list-style-type: none"> <li>Head of service (94161)</li> <li>Catering manager (94162)</li> </ul>	Level 4 (93360) <ul style="list-style-type: none"> <li>Head of kitchen (93360)</li> </ul>	Level 4 (94070) <ul style="list-style-type: none"> <li>Head of information (94071)</li> <li>Front office manager (94072)</li> </ul>	Level 4 (94130) <ul style="list-style-type: none"> <li>Leisure &amp; hospitality executive (94130)</li> </ul>	Level 4 (93330) <ul style="list-style-type: none"> <li>Aqua &amp; leisure executive (93330)</li> </ul>	Level 4 (94980) <ul style="list-style-type: none"> <li>Watersport industry Cooperated foreman (94980)</li> </ul>	Level 4 (94100) <ul style="list-style-type: none"> <li>Travel sales manager (94100)</li> </ul>	Level 4 (94180) <ul style="list-style-type: none"> <li>Facility services manager (94180)</li> </ul>	Level 4 (94210) <ul style="list-style-type: none"> <li>Fastfood service manager (94210)</li> </ul>

# Süreç geliştirme ve sürdürme



# Örnek: Aşçı

NIVEAU 1	<p><b>Horeca assistent</b></p> <p>Niveau 1 (90660)</p>			<p><b>Arbeidsmarkt Gekwalificeerd assistent</b></p> <p>Niveau 1 (90440)</p>	
NIVEAU 2	<p><b>Kok</b></p> <p>Niveau 2 (90760)</p> <ul style="list-style-type: none"> <li>• Kok (90760)</li> </ul>	<p><b>Medewerker bediening / café-bar</b></p> <p>Niveau 2 (94140)</p> <ul style="list-style-type: none"> <li>• Gastheer/-vrouw (94140)</li> </ul>	<p><b>Fastservice</b></p> <p>Niveau 2 (94190)</p> <ul style="list-style-type: none"> <li>• Medewerker fastservice (94190)</li> </ul>		
NIVEAU 3	<p>Niveau 3 (90770)</p> <ul style="list-style-type: none"> <li>• Instellingskok (90771)</li> <li>• Zelfstandig werkend kok (90772)</li> </ul>	<p>Niveau 3 (94150)</p> <ul style="list-style-type: none"> <li>• Bartender (94151)</li> <li>• Zelfstandig werkend gastheer/-vrouw (94152)</li> </ul>	<p>Niveau 3 (94200)</p> <ul style="list-style-type: none"> <li>• 1e Medewerker fastservice (94200)</li> </ul>	<p><b>Frontoffice- medewerker</b></p> <p>Niveau 3 (90620)</p> <ul style="list-style-type: none"> <li>• Receptionist (90622)</li> </ul>	
NIVEAU 4	<p>Niveau 4 (93360)</p> <ul style="list-style-type: none"> <li>• Leidinggevende keuken (93360)</li> </ul>	<p>Niveau 4 (94160)</p> <ul style="list-style-type: none"> <li>• Leidinggevende bediening (94161)</li> <li>• Cateringbeheerder/manager (94162)</li> </ul>	<p>Niveau 4 (94210)</p> <ul style="list-style-type: none"> <li>• Bedrijfsleider fastservice (94210)</li> </ul>	<p>Niveau 4 (94070)</p> <ul style="list-style-type: none"> <li>• Frontofficemanager (94072)</li> </ul>	<p><b>Ondernemer horeca/bakkerij</b></p> <p>Niveau 4 (90300)</p> <ul style="list-style-type: none"> <li>• Manager/ondernemer café/bar (90301)</li> <li>• Manager/ondernemer fastservice (90302)</li> <li>• Manager/ondernemer horeca (90303)</li> </ul>



# Örnek: Eğlence

NIVEAU 1				<b>Arbeidsmarkt Gekwalificeerd assistent</b> Niveau 1 (90440)
NIVEAU 2		<b>Leisure &amp; hospitality</b> Niveau 2 (94110) <ul style="list-style-type: none"> <li>• Leisure &amp; hospitality assistant (94110)</li> </ul>	<b>Aqua &amp; leisure</b> Niveau 2 (94080) <ul style="list-style-type: none"> <li>• Aqua &amp; leisure assistant (94080)</li> </ul>	
NIVEAU 3	<b>Frontoffice- medewerker</b> Niveau 3 (90620) <ul style="list-style-type: none"> <li>• Informatie-medewerker (90621)</li> </ul>	Niveau 3 (94120) <ul style="list-style-type: none"> <li>• Leisure &amp; hospitality host (94120)</li> </ul>	Niveau 3 (93240) <ul style="list-style-type: none"> <li>• Aqua &amp; leisure host (93240)</li> </ul>	<b>Medewerker watersport-industrie</b> Niveau 3 (93370) <ul style="list-style-type: none"> <li>• Medewerker watersportindustrie (93370)</li> </ul>
NIVEAU 4	Niveau 4 (94070) <ul style="list-style-type: none"> <li>• Hoofd informatie (94071)</li> </ul>	Niveau 4 (94130) <ul style="list-style-type: none"> <li>• Leisure &amp; hospitality executive (94130)</li> </ul>	Niveau 4 (93330) <ul style="list-style-type: none"> <li>• Aqua &amp; leisure executive (93330)</li> </ul>	

# Yakın geleceğe bakış

- AB'de MEÖ için kalite güvencesi
- Avrupa Yeterlilikler Çerçevesi (EQF)
- Avrupa MEÖ Kredi Sistemi (ECVET)
- Avrupa'da hareketlilik/dolaşım-işe yerleştirme
- Yetkinliğe dayalı öğrenme (Bilgi, Beceri, Yetkinliğe dayalı öğrenme sonuçları)

# Icten dileklerimiz ile hosgeldiniz

